



GAT MONTHLY MEMBERSHIP PROGRESS REPORT

Results as of: 8/31/2023

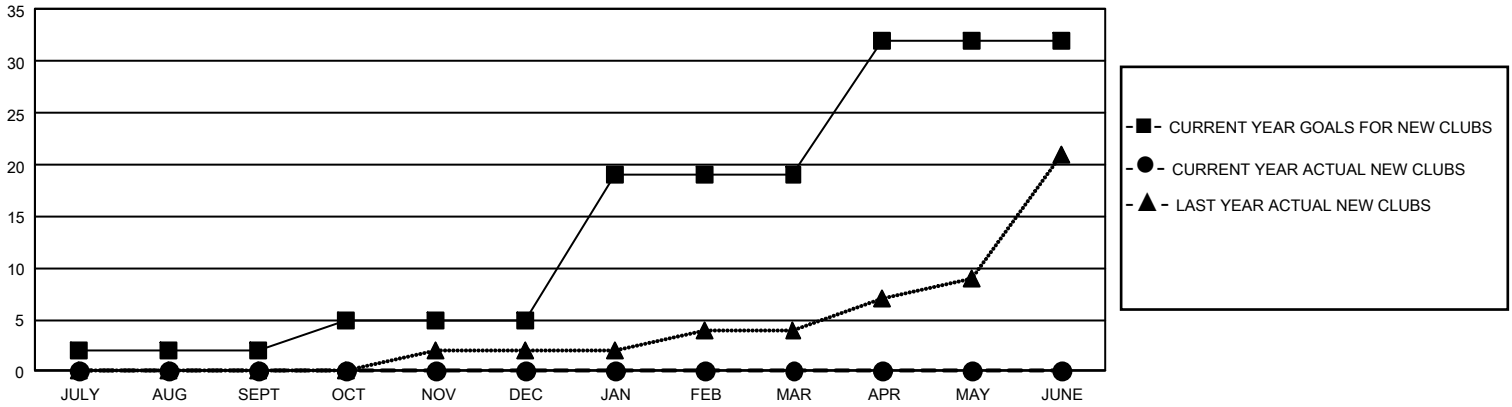
GMT Constitutional Area 4, Group H

REPORT DOES NOT INCLUDE CLUBS IN UNDISTRICTED AREAS.

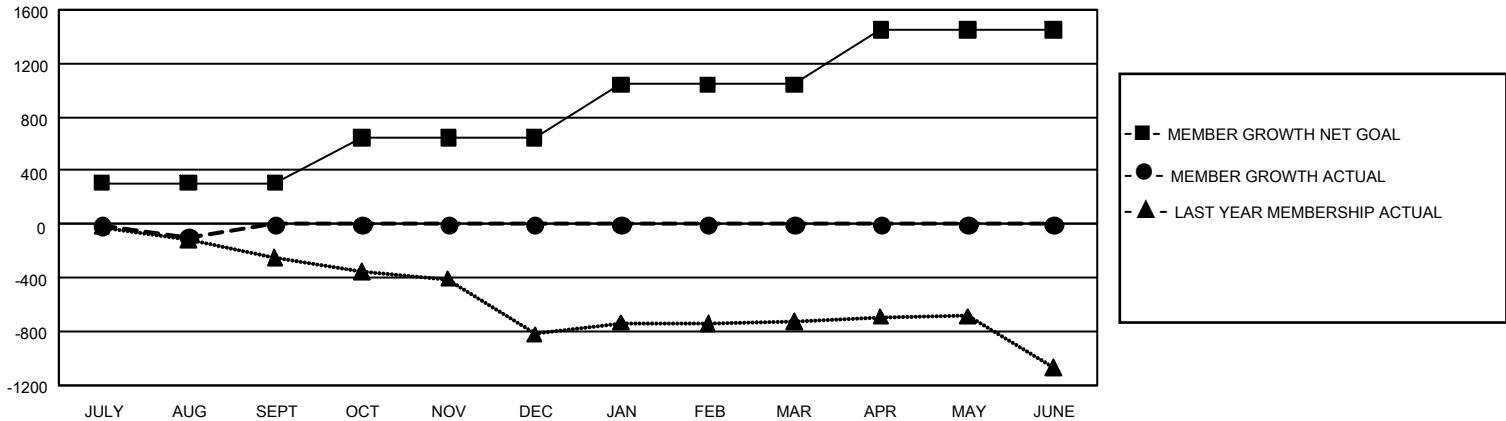
Clubs			
RESULTS FOR 2023-2024			
QUARTER	NEW CLUB GOAL	NEW CLUBS	DROPPED CLUBS
JULY/AUG/SEPT	6	0	11
OCT/NOV/DEC	9	0	0
JAN/FEB/MAR	42	0	0
APR/MAY/JUNE	39	0	0

Members			
RESULTS FOR 2023-2024			
QUARTER	MEMBER GROWTH NET GOAL	MEMBER GROWTH ACTUAL	DROPPED MEMBERS ACTUAL (including transfers)
JULY/AUG/SEPT	309	297	331
OCT/NOV/DEC	337	0	0
JAN/FEB/MAR	397	0	0
APR/MAY/JUNE	410	0	0

GOALS AND ACTUAL NEW CLUBS CUMULATIVE



GOALS AND ACTUAL MEMBERS CUMULATIVE



DROPPED CLUBS: 11	150 CLUBS OF 1,461 ADDED 1 OR MORE NEW MEMBERS	GENDER DISTRIBUTION	
	DROPPED MEMBERS		MALE 22,948 (75.13%) FEMALE 7,598 (24.87%) NON BINARY 0 (0.00%) PREFER NOT TO ANSWER 0 (0.00%)
DECEASED 41 CLUB CANCELLED 0 OTHER 290 TOTAL 331	CLICK HERE FOR CUMULATIVE MEMBERSHIP DATA	TOTAL FAMILY UNIT MEMBERS 1,148 FAMILY MEMBERS PAYING HALF DUES 573	